

## UNIT : 3 PLANTS AROUND US

CLASS : 2

SUBJECT : EVS

### I. Match the pictures with the words.



Climber



Shrub



Tree



Creeper



Herb

### II. Match the following.

|    |           |         |
|----|-----------|---------|
| a. | Pumpkin   | Creeper |
| b. | Pepper    | Spice   |
| c. | Neem Tree | Timber  |
| d. | Grapes    | Climber |
| e. | Cotton    | Fibre   |

### III. Fill in the blanks.

a. The part of the plant that grows **Above** the soil is called shoot system. (below / above)

- b. The **Leaves** are the green parts of a plant. (root / leaves)  
c. Plates can be made from **Areca** . (areca / neem)  
d. Flowers grow from **Buds**. (buds / fruits)

**IV. Choose the correct answer and circle it.**

a. A plant which gives fibre

**i) Banana**

(ii) Tulsi

(iii) Rose

b. Example of a creeper

(i) Mint

(ii) Paddy

**(iii) Watermelon**

c. This is a spice.

**(i) Bay leaf**

(ii) Banana leaf

(iii) Mango leaf

d. Winnow is got from

(i) Palm tree

(ii) Coconut tree

**(iii) Bamboo plant**

**BOOK INSIDE QUESTION ANSWERS**

**I. Hard words.**

1. Sapling
2. Shrub
3. Climber
4. Creeper
5. Support
6. Cosmetics
7. Spicer

8. Cereals

9. Fibre

## II. Question and answer:

### 1. Write the parts of a plant?

- Root
- Stem
- Leaf
- Flower
- Fruit

### 2. What is meant by root system?

The part of the plant that grows under the ground is called the root system.

### 3. What is meant by shoot system?

The part of the plant that grows above the ground is called the shoot system.

### 4. Write some ornamental plants?

- Rose
- Croton
- Cactus are some ornamental plants.

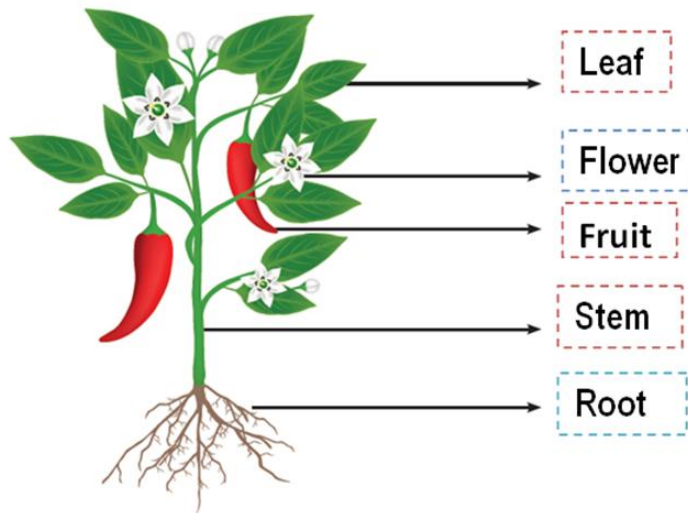
## III. Details.

### 1. What are the uses of plants?

- ❖ We get vegetables, fruits, pulses, spices and oil.
- ❖ We get many medicines from plants.

❖ We use different parts of the plants and as cosmetics fibre, jumbler, house, hold, things.

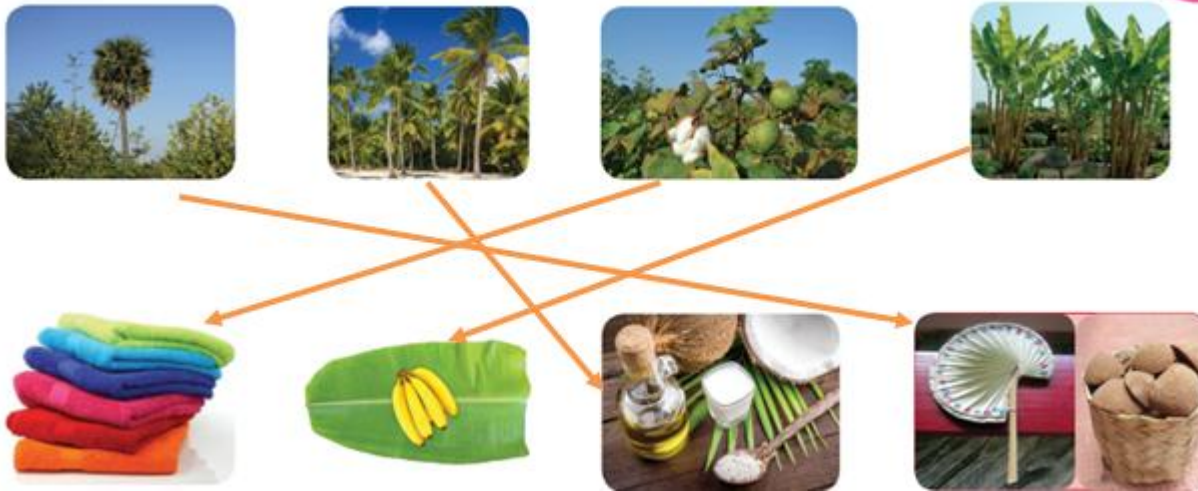
**IV. Label the parts of a plant. (Flower, Leaf, Stem, Root, Fruit)**








**V. Find the odd one in the group and put a tick (✓) mark.**

|    |   |   |  |
|----|---|---|--|
| a. |  |  |  |
| b. |  |  |  |
| c. |  |  |  |
| d. |  |  |  |

## VI. Match the plants with their products.



## VII. Observe the pictures and complete the table.

| Sl.No | Plant   | Colour of the stem<br>(green / brown / red) | Texture of the stem<br>(hard / soft) |
|-------|---|---|--------------------------------------|
| 1     |  | BROWN                                       | SOFT                                 |
| 2     |  | GREEN                                       | SOFT                                 |
| 3     |  | BROWN                                       | HARD                                 |
| 4     |  | RED   | SOFT                                 |
| 5     |  | RED   | SOFT                                 |

VIII. Tick (✓) the animals that you see on the given tree.



AAMS KOSAVAPF