

# 1. Our Environment

Class: III

Subject: Science

## I. Choose the correct answer.

- Which of these is an example for biotic factor?  
a. Water                      **b. Goat**                      c. Air
- Our environment is surrounded by \_\_\_\_\_.  
a. biotic factors    b. abiotic factors    **c. both biotic and abiotic factors**
- Human beings depend on \_\_\_\_\_ for their food.  
**a. plants**                      b. soil                      c. wood
- \_\_\_\_\_ are the primary producers.  
a. Non green plants                      **b. Green plants**                      c. Dry leaves
- Which is an example for decomposer?  
a. Mango tree                      **b. Bacteria**                      c. Deer
- Which of these living things would die if there were no green plants on earth?



- (a) a and c only      (b) b and d only      (c) d and a only      **(d) a, b, c and d**

## II. Fill in the blanks.

- Cow is a consumer.                      ( Cow / Soil )
- A young plant is known as sapling.                      ( tree / sapling )
- Planting of sapling provides oxygen. (oxygen / land )
- World Environment Day is June 5<sup>th</sup>. ( June 15<sup>th</sup> / June 5<sup>th</sup> )
- Decomposers get food from dead plants and animals.  
(Decomposers / Producers ).

## III. Match the following.

- Stone                      - Abiotic factor
- Bacteria                      - Decomposer
- Plants                      - Producers
- Buffalo                      - Consumer

## IV. Say true or false.

- Abiotic factors are important for biotic factors. **True**
- River is an example for biotic factor. **False**
- 'Van Mahotsav' is organised during the first week of July every year. **True**
- Plants are the consumers. **False**

5. Plants provide food and shelter to living things.

True

**V. Answer the following.**

1. Vijay placed two things 'P' and 'R' (one living and one non-living) in separate cages with food and water.

| Number of weeks | Weight of 'P' | Weight of 'R' |
|-----------------|---------------|---------------|
| Week 1          | 2 kg          | 1.5 kg        |
| Week 2          | 4 kg          | 1.5 kg        |
| Week 3          | 6 kg          | 1.5 kg        |
| Week 4          | 8 kg          | 1.5 kg        |

a. Which thing is likely to be a living thing? Give reason for your answer.

'P' is likely to be living things. Because its weight has been increased by 2kg every week due to its growth.

b. What will be the weight of living thing in week 6? 12kg

2. Write two examples for biotic and abiotic factors.

Biotic factor - Lion, Dove, Human beings.

Abiotic factor - Air, Water, Temperature.

3. Write any three differences between living and non-living things.

Living Thing - Lion, Dove, Human beings.

Non Living Things - Air, Water, Temperature.

4. List the abiotic factors needed for insects.

Insects- (Air, Soil)

5. What are the biotic factors of a balanced ecosystem?

- Producers
- Consumers
- Decomposers

6. Why plants are called primary producers?

- The living things that can prepare their own food are called producers. Green plants are the producers.
- They make their own food by the process of photosynthesis. Hence, they are called primary producers.

## 7. Write any four benefits of plants.

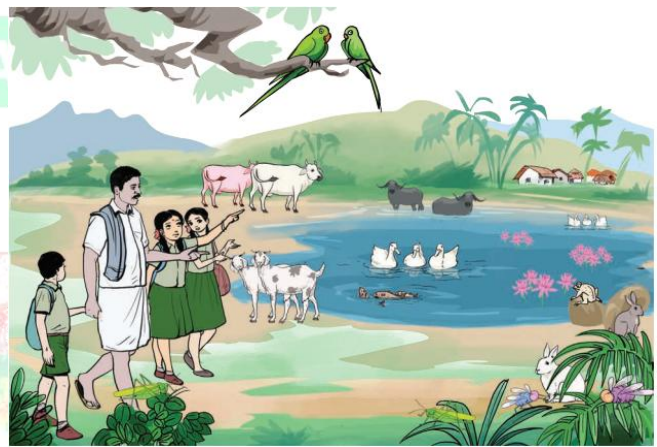
- Provide oxygen for breathing.
- Provide food and shelter to living things.
- Absorb harmful gases and smoke from the surroundings.
- Help in bringing rainfall.
- Give wood for making furniture.
- Offer a good environment to live.

## BOOK INSIDE

### Let Us Try:

#### 1. Write the names of the animals that you see in the picture.

Fish          Frog          Duck  
Goat         Deer         Cow  
Parrot        Buffalo      Grass hopper



#### 2. Classify the following into natural things and man-made things.

(Dam, river, coconut tree, building, jasmine flower, hill, cloud, silver vessel, cell phone, temple, cake, air, sun, ship, water, pencil, book, doll, football, sunflower, crocodile, aero plane)

| Natural things  | Man- made things   |
|---|--|
| River, Coconut tree, Jasmine flower, Hill , Cloud , Air , Sun , Water , Sunflower, Crocodile. | Dam, Building, Silver vessel , Cell phone , Temple , Cake, Ship, Pencil ,Book , Doll, Foot ball , Aeroplane. |

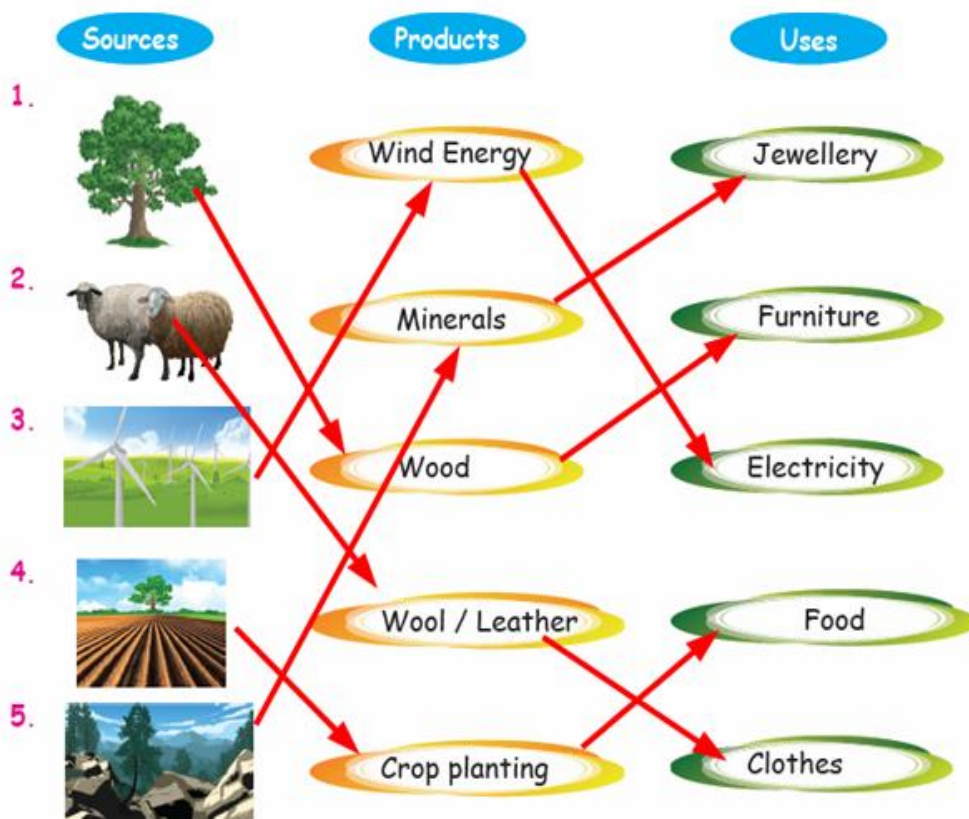
#### 3. Think and Answer

- a. A swing goes to and fro. Is it living or non-living? Non-living.
- b. We get wood from trees which are the living things. A chair is made from wood. Is the chair a living thing or a non-living thing? Non-living thing.

4. Classify the following as Biotic / Abiotic factors.

| Factors   | Biotic   | Abiotic         |
|---|----------|-----------------|
| Plants, Chair, Fish, Elephant, Washing machine, Peacock, Book, Glass, Chalk piece, Cat, Rain, Frog, Watch, Man, Pen, Lion, Water. | Plants   | Chair           |
|   | Fish     | Washing Machine |
|   | Elephant | Book            |
|   | Peacock  | Glass           |
|   | Cat      | Chalk Piece     |
|   | Frog     | Watch           |
|   | man      | Pen             |
|   | Lion     | Water           |

5. Match the following sources with their products and uses.



6. Look at the picture and answer the question

Which of the non-living things can float?

- a. Iron rod   b. Stone   c. Air filled ball   d. Coin



7. The following statements describe some of the characteristics of living things. Identify and write the characteristic features using the given hints.

(Characteristics Hints: Move, Breathe, Feel, Needs Food, Grow, Reproduce)

| Statements  | Characteristics features |
|---|--------------------------|
| Touch-me-not plant closes its leaves when it is touched | Feel                     |
| A papaya seed becomes a papaya tree                     | Grow                     |
| A dove flies in the sky                                 | Move                     |
| A cow eats grass  | Needs Food               |
| A cat gives birth to kittens                            | Reproduce                |
| Human beings and animals breathe in and breathe out air | Breathe                  |

8. Divide the class into two groups and ask the first group to write any five biotic factors and the second group to write any five abiotic factors seen around the school.

| Biotic factors | Abiotic factors |
|----------------|-----------------|
| Plants         | Water           |
| Dog            | Stone           |
| Cat            | Sun             |
| Rabbit         | Soil            |
| Man            | Air             |

9. Write the needs of the following.

- Birds : Trees, Insects, Air, Water, Sunlight.
- Insects : Soil, Air, Plants, Small Creatures.
- Human beings : Water, Plants, Air, Sun light, Animals.

### Let us Discuss:

2. Why is plant the most important living thing?

Plants provide food and shelter to living things and also provide oxygen for breathing.

3. Discuss in a group and create an interlink of living and non-living factors.

Plants → Water, soil, air and sunlight.

### Let us Try:

1. Write the abiotic factors needed for the following biotic factors to survive.

(Air, Water, Sunlight, Soil, Land, Wheat, Fruits, Grass, Hen)

- Animals: Air, Water, Sunlight, Soil, Land, Fruits, Grass.
- Plants: Air, Water, Sunlight, Soil, Land, Wheat, Fruits.
- Human beings: Air, Water, Sunlight, Soil, Land, Wheat, Fruits, Hen.

### 2. An animal that

- flies in the air is : Birds
- lives in water is : Fish.
- moves on the ground is : Animals.
- eats only plants is : Herbivores.

### 3. Classify the following biotic factors

(Tulsi, Fungi, Mango tree, Rabbit, Eagle, Cat, Dog, Cucumber plant, Human, Grass, Crocodile, Crow, Bacteria)

**Producers** : Tulsi, Mango tree, Cucumber plant, Grass.

**Consumers** : Rabbit, Cat, Dog, Human.

**Decomposers** : Fungi, Bacteria.

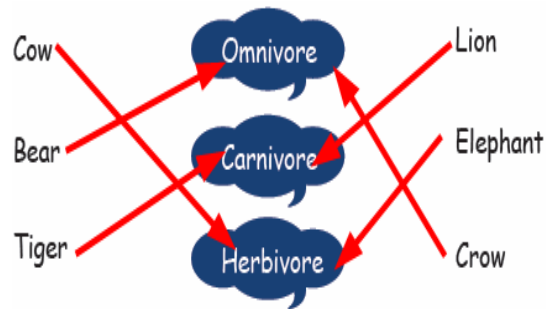
### 4. Plants and human beings are living things. Why do human beings depend on plants?

Plants provide food and shelter to living things and also provide oxygen for breathing.

### 5. The names of several natural resources are hidden in the box below. Find as many as possible. Some words are repeated.

|   |   |   |   |   |   |   |   |   |   |
|---|---|---|---|---|---|---|---|---|---|
| O | R | X | S | E | P | L | A | N | T |
| A | T | Y | E | N | O | U | F | C | S |
| N | R | Z | A | U | N | L | A | K | E |
| I | E | S | N | L | D | E | S | E | A |
| M | E | P | M | L | T | W | U | S | J |
| A | R | E | T | A | W | Z | N | B | H |
| L | Q | M | B | N | W | A | T | E | R |
| E | E | R | T | D | I | Y | E | L | X |

## 6. Link the animals as herbivores, carnivores and Omnivores



## 7. Write any two uses of trees.

1. Provide food and shelter to living things.
2. Give wood for making furniture

## 8. Write some slogans on 'Save Plants' and paste them on the tree in your school campus/road sides.

(E.g., Take care of the Earth and it will take care of you. It's not yours, nor mine, it's ours)

1. Don't make trees rare, Keep them with care.
2. Take care of the trees, They will take care of you.

