

Unit: 5 - Wonders of Nature

Class: II

Subject: EVS

I. Hard words.

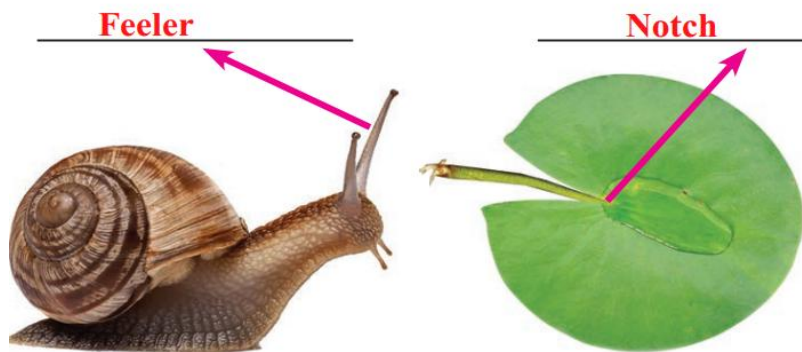
- | | | | |
|------------|--------------|------------|------------|
| 1. Surface | 2. Groundnut | 3. Kurinji | 4. Flowers |
| 5. crown | 6. Insects | 7. Birds | 8. Spider |
| 9. Lizard | 10. Snail | | |

II. Fill in the blanks.

1. The Kurinji or Neelakurinji shrub is found in the Nilgiri mountains in Tamil Nadu.
2. Calotropis has a group of waxy flowers.
3. The leaf of a lily has a waxy coat on the upper surface.
4. Insects have eight legs.
5. Spider make threads called spider silk.

Evaluation

1. Label the parts. (Notch, Feeler)



2. Fill in the blanks and identify the plant and animal.

1. I bloom in the Mountains. (mountains /deserts)
2. I am Purple blue in colour. (brown / purple blue)
3. The name Nilgiri is because of me. (Nilgiri/ Yelagiri)
4. Who am I ? Kurunji



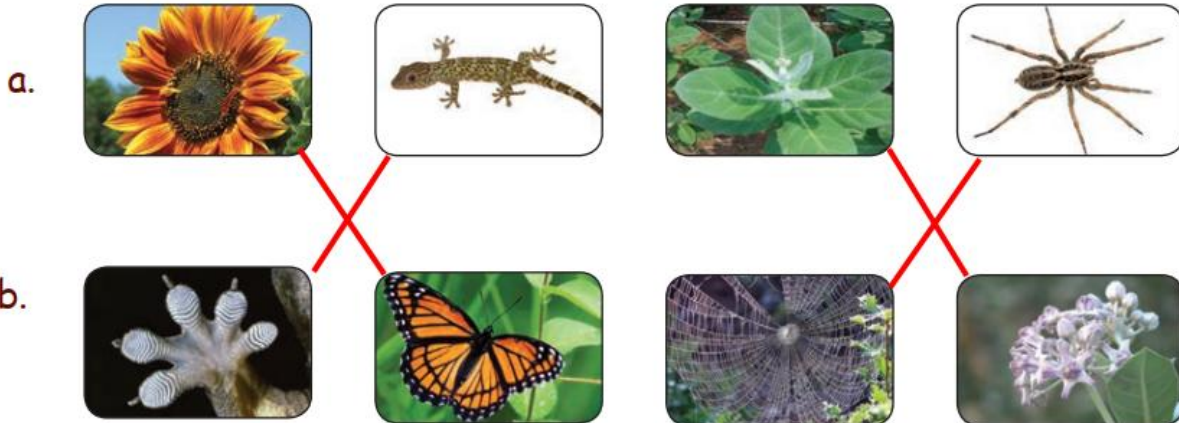
1. I have 2 pairs of feelers. (2/4)
2. My eyes are seen on the feelers. (feelers/tail)



3. I pull my body back into my shell.

4. Who am I? Snail

3. Match the following.



4. Fill in the blanks with suitable words.

- In groundnut plants, the nuts are seen under the soil. (above / under)
- In the Erukku plant, the flowers are crown shaped. (crown / spherical)
- Insects suck the nectar from the flower. (milk / nectar)
- The spider is not an insect. (bee / spider)
- In a lizard the tail grows again when cut. (dog / lizard)

5. Choose and write the name of the flowers and the animal.



Jasmine



Spider



Jungle Flame